

# StarSuite

Network Management  
Solution for 4G Networks



We're on your wavelength.

# StarSuite

## Star Management Suite

Network management presents numerous challenges for service providers. Operators are pushing to increase customer satisfaction and loyalty, while maintaining quality of service. At the same time, they are faced with enabling mass deployments, shortening time to market, and assuring cost efficiencies. Telrad Networks offers a comprehensive suite of network management tools designed to efficiently manage network operations across the entire service life cycle.

Star Suite: The field-proven, network management solution.

The Star Management suite is a comprehensive, field-proven, carrier-class set of tools that support the entire 4G service life-cycle - from initial installation to full service provision and ongoing maintenance and support activities. The suite adds value to any 4G investment and can be deployed gradually in accordance with network needs.

The Star management suite helps service providers cost-effectively manage 4G deployments, roll out new services and maintain high service levels to ensure profitability and stay competitive. It enables service providers to reduce the operational expenditures (OPEX) involved in deploying and maintaining a 4G network by streamlining the advanced monitoring, reporting and troubleshooting tasks required for efficient network operation.

- Ensure Quality of Service (QoS) and Quality of Experience (QoE)
- Easy deployment with smooth integration in OSS/BSS environments
- Reduce Total Cost of Ownership (TCO) and minimize OPEX
- Shorten time-to-market for new 4G services
- Pay-as-you-grow deployment
- High Scalability
- Northbound Interfaces
- Multi-OS Platform



### StarReports

Provides customized and flexible reporting for smarter, more focused and better informed decision-making power.



### StarACS

Remote CPE management, monitoring and diagnosis for data, voice & video services on TR-069 CPEs, providing quick and seamless issue resolution and updates.



### StarQuality

Carrier-class performance and traffic monitoring system that ensures Quality of Service (QoS) and optimizes 4G-network performance.



### StarManager

Provides full management and visibility of the entire 4G network.

StarSuite  
NMS  
Components

## StarManager



StarManager provides full management and visibility of the entire 4G network.

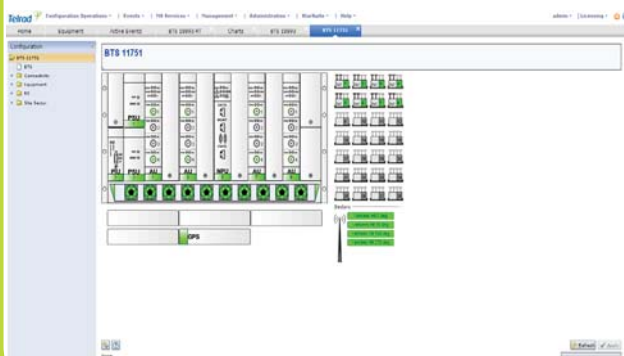
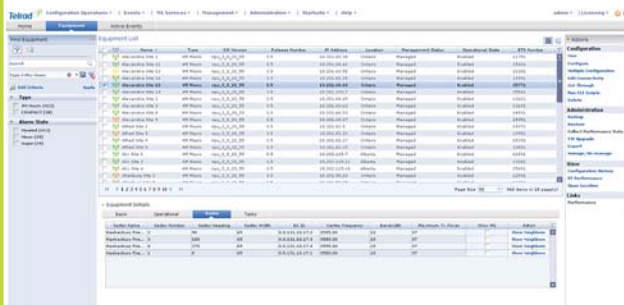
- ◆ Configuration & Maintenance
- ◆ Extensive Fault Handling
- ◆ Real-Time Performance
- ◆ Distributed and scalable server architecture
- ◆ Smooth integration with OSS layers

### Batch and Bulk Operations

Particularly suited for bulk operations and pre-provisioning on large-scale deployments, StarManager supports batch configuration and maintenance tasks across multiple network elements.

### Comprehensive FCAPS to Maximize Performance

StarManager provides comprehensive FCAPS management functionality including fault, configuration, administration, real time performance and security—all accessed via an easy-to-use GUI. Designed to address the needs of network technicians, regional and national Network Operations Centers (NOCs), StarManager enables fully functional network surveillance, monitoring and configuration.



## StarQuality



StarQuality is a carrier-class performance and traffic monitoring system that ensures Quality of Service (QoS) and optimizes 4G-network performance.

- ◆ Configuration & Maintenance
- ◆ Optimize 4G networks
  - Maximize traffic capacity
  - Ensure Quality-of-Service (QoS) & service levels
  - Proactively identify problems & bottlenecks
  - Detect performance degradation
- ◆ Increase subscriber loyalty & satisfaction

### Detect Problems with Threshold Crossing Alerts (TCAs)

TCA mechanism detects abnormal traffic patterns and load conditions, generates alarms and anticipates performance degradation.

### Intuitive Web-based Client and User Interface

StarQuality boasts an intuitive web-based GUI for easy navigation and drill-down, consisting of base station, sector and subscriber device data in user-friendly graphs. Operators can access customized data and exported to popular file formats for analysis.

### Flexible Report Generation

Generate versatile reports for detecting potential network problems and resolving them before the network is adversely affected. These capabilities include comparison, trend analysis and other user-defined reports. Built-in reports enable easy identification of the most heavily loaded and problematic sectors, as well as daily, weekly, or monthly report view



## StarACS



StarACS provides remote CPE management, monitoring, and diagnosis for data, voice, and video services on TR-069 CPEs providing quick and seamless issue resolution and updates.

4G network Remote Management support for entire end user device service life cycle

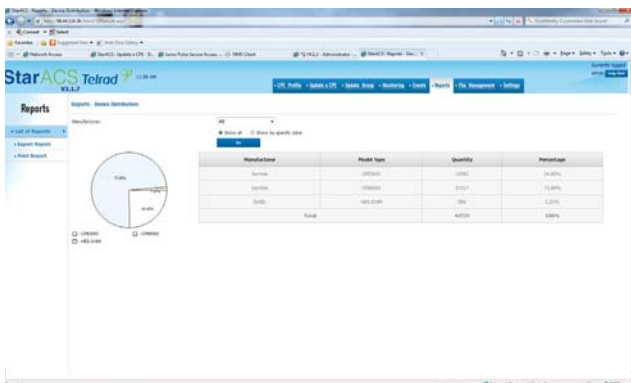
- ◆ Zero-touch installation
- ◆ Auto provisioning
- ◆ Device activation
- ◆ Service introduction

### Batch and Bulk Operations

The StarACS task manager enables operators to perform batch operations on multiple CPEs. Its simultaneous configuration task allocation saves time while significantly reducing management costs.

### Zero-Touch Provisioning

StarACS automatically provisions and remotely sets up devices to support value-added services. The CPE automatically registers first-time connections on the StarACS server, receiving updated firmware, general and individual settings.



## StarReport



StarReport provides customized and flexible reporting for smarter, more focused and better informed decision-making power.

Flexible tool providing predefined and ad hoc network reports for key decision making

- ◆ Predefined report package with network-level configuration, inventory and performance visibility
- ◆ Quick and efficient cross-functional reports for inventory, configuration, and performance

### Unified, Cross-Platform Data

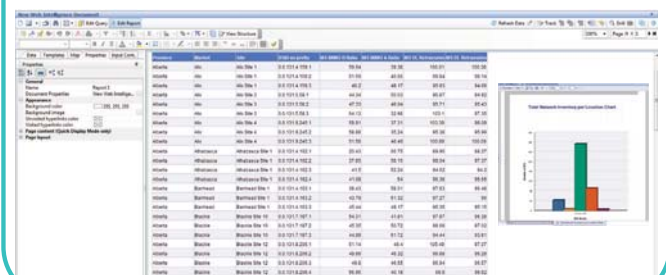
StarReports integrates and collects data from StarSuite components, enabling comprehensive, cross-product reporting.

### Reporting Capabilities

Providing in-depth analysis of network status, configuration and performance, StarReport gives a quick and efficient way to generate network-wide inventory, configuration, performance and cross-functional reports, with a holistic view of the network.

### Optimizing Resource Utilization

Predefined and ad-hoc reports help analyze network behavior, monitor trends, and identify issues or bottlenecks. These insights help anticipate problems before they happen, allowing preventive measures and enabling reduced OPEX.



Telrad Networks is a global provider of innovative 4G wireless and telecommunications solutions, boasting over 280 4G deployments in 150 countries. With its acquisition of the BreezeMAX™ and BreezeCOMPACT™ product suite, Telrad stands at the forefront of the technology evolution of next-generation WiMAX and LTE solutions. Since 1951, the company has been a recognized pioneer in the telecom industry, facilitating the connectivity needs of millions of end-users through operators, ISPs and vertical markets. For more, please visit [telrad.com](http://telrad.com) or email [sales@telrad.com](mailto:sales@telrad.com).

© Copyright 2013 Telrad Networks Ltd. All rights reserved. Telrad® its logo and all names, product and service names referenced herein are either registered trademarks, trade names or service marks of Telrad Ltd. in certain jurisdictions. All other names are trademarks of their respective owners. Content herein is subject to change without further notice. Any PO's submitted and actual supply of products and/or grant of licenses are subject to Telrad's General Terms and Conditions and/or any other effective agreement between the parties. Roadmap information is provided solely for information purposes, and is not a commitment to deliver any products, features and/or functionalities.