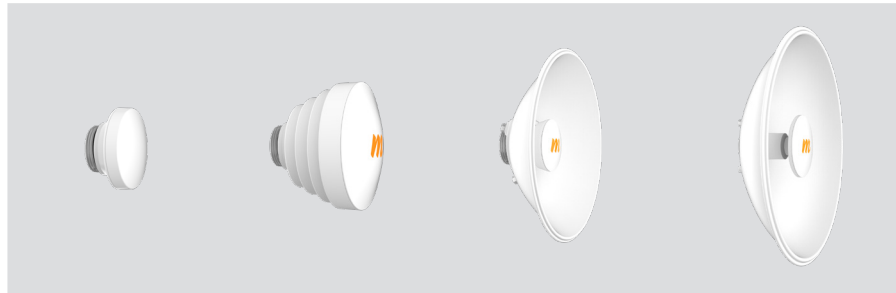


N5X Antenna : Antenne à visser pour radio B5X ou C5X

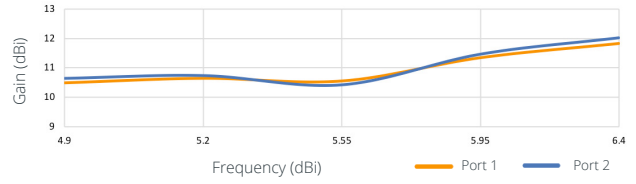
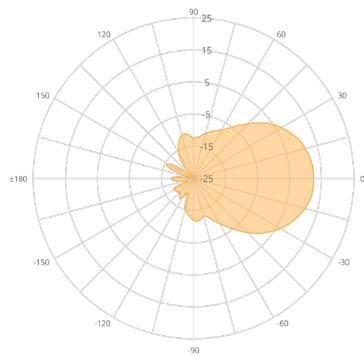
| | |
|----------------|--|
| N5-12-10000086 | N5-12: Modular Twist-on Antenna 12dBi gain Horn for B5X/C5x |
| N5-16-10000087 | N5-16: Modular Twist-on Antenna 16dBi gain Horn for B5X/C5x |
| N5-20-10000088 | 2 x N5-20: Modular Twist-on Antennas 20dBi gain Dish for B5X/C5x |
| N5-25-10000089 | 2 x N5-25: Modular Twist-on Antennas 25dBi gain Dish for B5X/C5x |



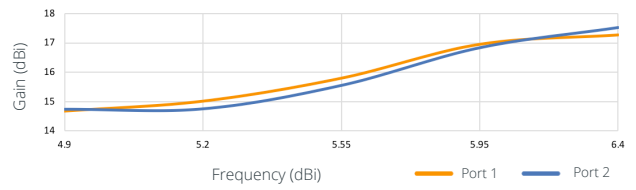
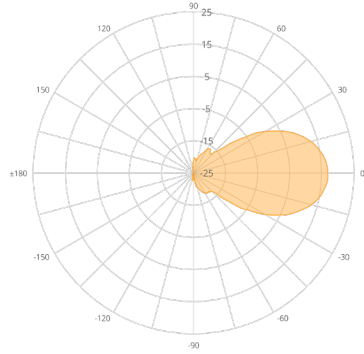
| | | | | |
|--|---|---|---|--|
| Product | N5-X12 (horn) | N5-X16 (horn) | N5-X20 (dish) | N5-X25 (dish) |
| Gain | 12 dBi | 16 dBi | 20 dBi | 25 dBi |
| Polarization | Dual-slant 45° | Dual-slant 45° | Dual-slant 45° | Dual-slant 45° |
| Beamwidth, Symmetric (3 dB) | 38° | 22° | 12° | 8° |
| Front-to-Back Ratio (min) | 29 dB | 50 dB | 35 dB | 40 dB |
| Front-to-Side Ratio (min) | 27 dB | 43 dB | 37 dB | > 45 d |
| Weight | 0.16 kg (0.35 lbs) | 0.61 kg (1.35 lbs) | 0.77 kg (1.70 lbs) | 0.98 kg (2.15 lbs) |
| Dimensions | Diameter: 76 mm (2.99") Depth: 67 mm (2.63") | Diameter: 160 mm (6.29") Depth: 116 mm (4.57") | Diameter: 270 mm (10.63") Depth: 83 mm (3.27") | Diameter: 429 mm (16.89") Depth: 116 mm (4.57") |
| Mount | Mimosa N5-X twist-on | Mimosa N5-X twist-on | Mimosa N5-X twist-on | Mimosa N5-X twist-on |
| Wind Survivability | 200 km/h (125 mph) | 200 km/h (125 mph) | 200 km/h (125 mph) | 200 km/h (125 mph) |
| Wind Loading | 3.27 kg @ 160 km/h (7.20 lbs @ 100 mph) | 5.13 kg @ 160 km/h (11.30 lbs @ 100 mph) | 14.55 @ 160 km/h (32.07 lbs @ 100 mph) | 36.26 kg @ 160 km/h (79.95 lbs @ 100 mph) |

Polarisation et gain en fonction de la fréquence

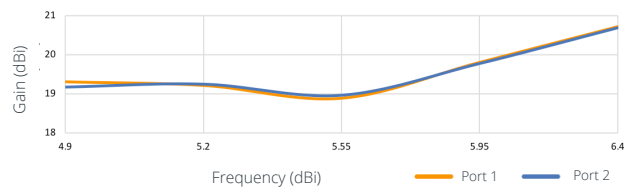
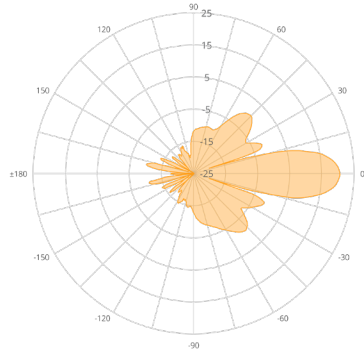
N5-X12 (12 dBi)



N5-X16 (16 dBi)



N5-X20 (20 dBi)



N5-X25 (25 dBi)

