



Unleashed R670 Access Point Quick Setup Guide

This *Quick Setup Guide* provides step-by-step instructions on how to set up your Unleashed R670 access point. After completing the steps in this guide, you will be able to place the access point (AP) at your site and provide network access to wireless clients.

For detailed information on configuration and administration of your Unleashed R670 AP, refer to the documentation available in the [Unleashed Document Library](#). This AP is supported by Unleashed 200.17 and later releases.

FIGURE 1 Unleashed R670 Top View



Before You Begin

Before deploying RUCKUS products, please check for the latest software and the release documentation.

- Release Notes and other user documentation are available at <http://support.ruckuswireless.com/documents>.
- Software upgrades are available at <http://support.ruckuswireless.com/software>.
- Software license and limited warranty information are available at <http://support.ruckuswireless.com/warranty>.

This Guide in Other Languages

- 请从以下网站获得该指南的简体中文版 <http://docs.commscope.com/?docs-box>.
- Vous trouverez la version française de ce guide à l'adresse suivante <http://docs.commscope.com/?docs-box>.
- このガイドの日本語版は <http://docs.commscope.com/?docs-box> でご覧ください。
- 이 가이드의 한국어 버전은 웹 사이트 (<http://docs.commscope.com/?docs-box>) 에서 확인하시기 바랍니다.
- Veja a versão em português (Brasil) deste guia em <http://docs.commscope.com/?docs-box>
- Puede ver la versión en español (América Latina) de esta guía en <http://docs.commscope.com/?docs-box>.

Package Contents

A complete RUCKUS Unleashed R670 installation package includes all of the following items:

- RUCKUS Unleashed R670 Access Point
- One T-bar mounting bracket
- Four T-bar mounting clips
- Two #6 x 0.75-in. plastic wall anchors
- Two #8 x 1.0-in. metal screws
- One 66-mm unit removal pin
- Declaration of Conformity/Regulatory flyer

Required Hardware and Tools

Required hardware:

- Computer with an Ethernet port and Wi-Fi adapter, or a mobile device (such as an iPhone or Android)
- CAT 6 (or better) Ethernet cable
- RUCKUS 48 VDC power adapter (902-1170-XX00) (sold separately) or IEEE 802.3at/bt-compliant Power over Ethernet (PoE) switch or PoE injector (902-1180-XX00)

Required installation tools for mounting on a flat surface using the factory-supplied screws and anchors:

- An electric drill with a 4.75-mm (3/16-in.) drill bit
- Phillips-head screwdriver

Optional hardware and tools:

- Customer-ordered RUCKUS secure mounting bracket kit (902-0120-0000):
 - If you are mounting the AP on a flat surface using the secure mounting bracket kit, then you need an electric drill with 4.75-mm (3/16-in.) drill bit.
 - If you are mounting the AP on a pipe or pole using the secure mounting bracket kit, then you will also need a 38.1-mm to 63.5-mm (1.5-in. to 2.5-in.) pipe or pole, two pole clamps, and hand tools to tighten the clamps.

Connecting Your Computer to the AP

1. If PoE-powered, connect your PoE port on the network switch to the PoE port on the AP using an Ethernet cable. Refer to [Figure 2](#).
2. (Optional) Connect the DC cable of the DC power adapter to a convenient and protected power source. Connect the DC output cable of the DC power adapter to the 48 VDC port on the AP.

NOTE: In general, switches must have the Link Layer Discovery Protocol (LLDP) enabled. The PoE switch port must run the LLDP and Power over Ethernet/MDI (BT6) for the R670 AP to operate in full-power mode.

NOTE: If the AP is powered by IEEE 802.3at PoE, the supported feature set is reduced. For the product data sheet, refer to <https://www.ruckusnetworks.com/products/wireless-access-points/>.

3. Verify that the PWR LED on the AP is lit a steady green.

FIGURE 2 R670 AP Ports on the Bottom Panel

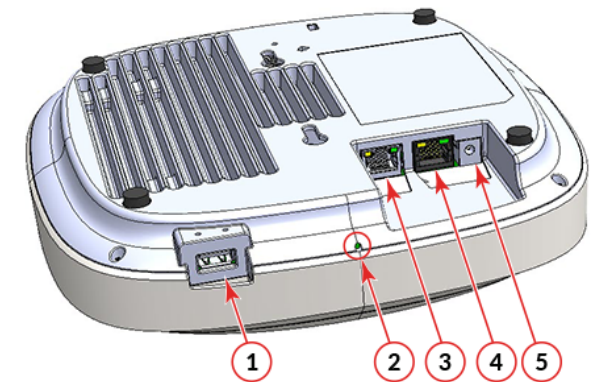


TABLE 1 R670 AP Ports

No.	Label	Description
1	USB	USB port <ul style="list-style-type: none">• Interface: USB 2.0• Connector: USB - Type-A plug

TABLE 1 R670 AP Ports (continued)

No.	Label	Description
2	Reset	Reset button can be accessed using a rigid, thin wire (such as a straightened paperclip) or the factory-supplied 66-mm unit removal pin. <ul style="list-style-type: none">Soft reset: Press and hold less than 4 seconds.Factory reset: Press and hold more than 5 seconds and less than 15 seconds. The LED will alternate red and green.Recovery mode with factory defaults: Press and hold more than 15 seconds. The LED will alternate between red and amber once before the AP reboots.
3	1G ETH	10/100/1000 Mbps port: RJ-45 Ethernet port (non-PoE)
4	5G ETH PoE	100/1000/2500/5000 Mbps PoE In port: RJ-45 Ethernet port (supports High Power 802.3bt PoE)
5	48 VDC	48 VDC input

NOTE: The AP enters 802.3af PoE power mode during transition while booting.

LED Signals

The LED on the AP has several color states that determine the various states of the AP. The following table provides a high-level description of each color that may appear on the AP.

TABLE 2 R670 LED Signals

Color	Description
Red	The AP is receiving power and is booting up its firmware. If the AP is cycling between Red and another color, the AP is proceeding with a factory reset process.
Amber	The AP is booting up software services. These software services include loading the controller and loading a new configuration or firmware update. This color also denotes if there are issues with either the network gateway or controller.
Green	The AP has finished booting up software services and there are no issues with connectivity or controller management.

Unleashed Network Configuration

Option 1: Setup Using the Unleashed Mobile App

To perform network setup using the Unleashed mobile app, download the app from the device-appropriate app store (Apple iOS or Google Play).

- As soon as the Unleashed AP is powered on and connected to the local network, it boots up and begins broadcasting a temporary unencrypted WLAN named “Configure.Me-[xxxxxx]” from all radios.
- Using your client’s Wi-Fi connection settings, select and associate to the “Configure.Me-[xxxxxx]” WLAN.
- Launch the Unleashed mobile app, and follow the on-screen instructions to configure your Unleashed network(s).

FIGURE 3 Unleashed Mobile App for iOS and Android

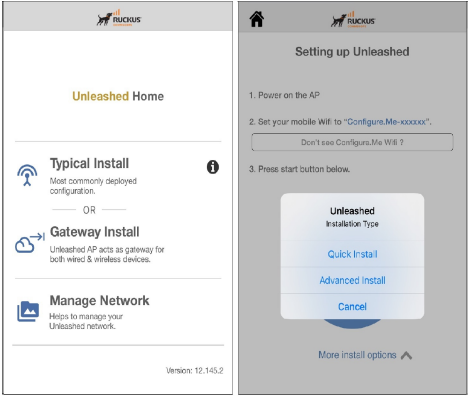
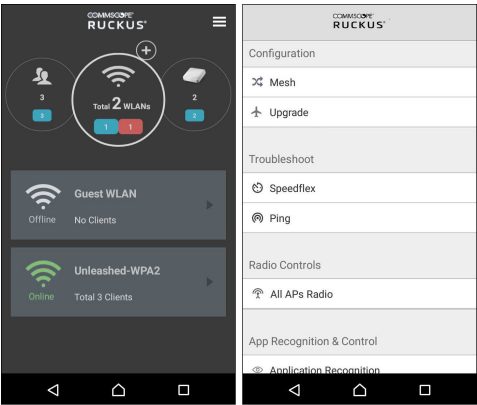


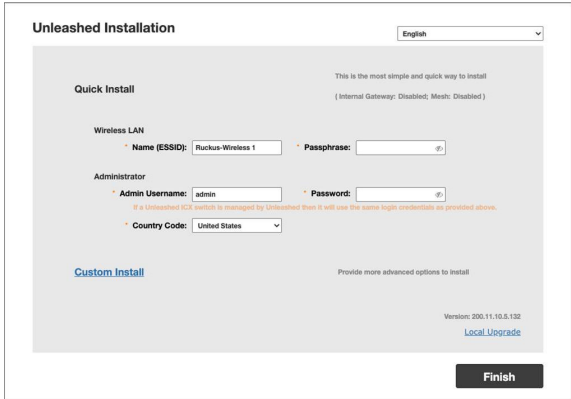
FIGURE 4 Configuring Unleashed from the Mobile App



Option 2: Setup Using a Web Browser

- As soon as the Unleashed AP is powered on and connected to the local network, it boots up and begins broadcasting a temporary unencrypted WLAN named “Configure.Me-[xxxxxx]” from all radios.
- Using your client’s Wi-Fi connection settings, select and associate to the “Configure.Me-[xxxxxx]” WLAN.
- Launch a web browser and enter the following into the browser’s URL bar: unleashed.ruckuswireless.com (or <https://10.154.231.125:9090/>) and press **Enter**.
- You will be redirected to the Setup Wizard. Complete the steps in the Setup Wizard and click **Finish**. Follow the on-screen instructions or refer to the release-specific *RUCKUS Unleashed User Guide* to configure your Unleashed network.

FIGURE 5 Setting Up Your Unleashed Network from the Setup Wizard

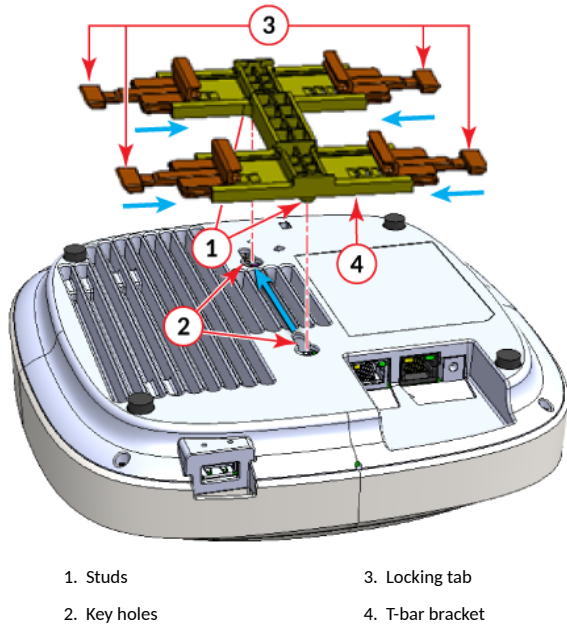


Mounting on a Drop-Ceiling T-Bar

The factory-supplied T-bar mounting assembly kit allows you to attach the AP to recessed and flush drop-ceiling T-bars.

- Position the studs on the bottom of the T-bar bracket (1 in Figure 6) in the keyholes on the AP enclosure (2 in Figure 6).
- Slide the T-bar bracket away from the Ethernet ports on the bottom of the AP until the AP retainer tab snaps into place, trapping the T-bar bracket studs in the keyholes (2 in Figure 6).

FIGURE 6 Attaching the T-bar Bracket to the AP



3. Insert the locking tab (3 in [Figure 6](#)) so it is in the first position on the T-bar bracket.
4. Gently push the ceiling tiles, if present, up and out of the way.
5. Position the T-bar bracket so its two clasps grip one edge of the T-bar (3 in [Figure 6](#)). Make sure that both clasps are gripping the T-bar.

NOTE: Ensure that the center line of the bracket body is aligned with the center line of the T-bar.

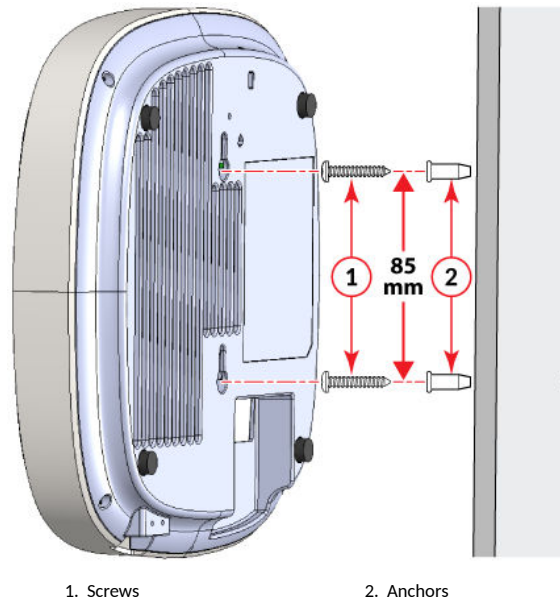
6. Hold the AP in place and gently push the opposing locking tab (3 in [Figure 6](#)) until its clasp grips the other edge of the T-bar. Make sure that all four clasps are gripping the T-bar.

Mounting on a Flat Surface

The factory-supplied mounting screws and plastic wall anchors allow you to attach the AP to a wall or other flat surface.

1. Use a 4.75-mm (3/16-in.) drill bit to drill holes approximately 25 mm (1 inch) deep into the mounting surface.
2. Insert the factory-supplied anchors (2 in [Figure 7](#)) and mounting screws (1 in [Figure 7](#)) into the mounting surface, leaving approximately 6 mm (0.25 inch) of the screw heads protruding for the AP enclosure keyholes.

FIGURE 7 Flat Surface Mounting



3. Place the AP onto the mounting screws so the screw heads enter the keyholes on the AP enclosure, and push the AP down until the AP retainer tab snaps into place.

Cautions and Notices

A caution calls your attention to a possible hazard that can damage equipment.

CAUTION! The equipment is intended for installation in a Restricted Access Location.

CAUTION! The equipment can be connected to PoE networks without routing to the outside plant.

NOTE: The 6 GHz radio option is not allowed for use in China.

RUCKUS Wireless LLC is a wholly owned subsidiary of CommScope, Inc.

© 2024 CommScope, Inc. All rights reserved.

CommScope and the CommScope logo are registered trademarks of CommScope and/or its affiliates in the U.S. and other countries. For additional trademark information see <https://www.commscope.com/trademarks>. All product names, trademarks, and registered trademarks are the property of their respective owners.